

[View this email in your browser](#)



Education

Term 1 Newsletter

School Sport Unit



Welcome back to Term 1!

After a challenging 2020, I am excited to announce the recommencement of all School Sport Unit (SSU) programs, in line with the easing of COVID restrictions. With a busy term well and truly upon us, I encourage you to read through our newsletter to stay up-to-date with program-specific information, updates and upcoming events.

Thank you for your continued support of the SSU and your commitment to providing high quality and enjoyable physical activity experiences for your students. We look forward to continue working towards building the SSU as a leader in the provision of sport and physical activity opportunities and information in 2021.

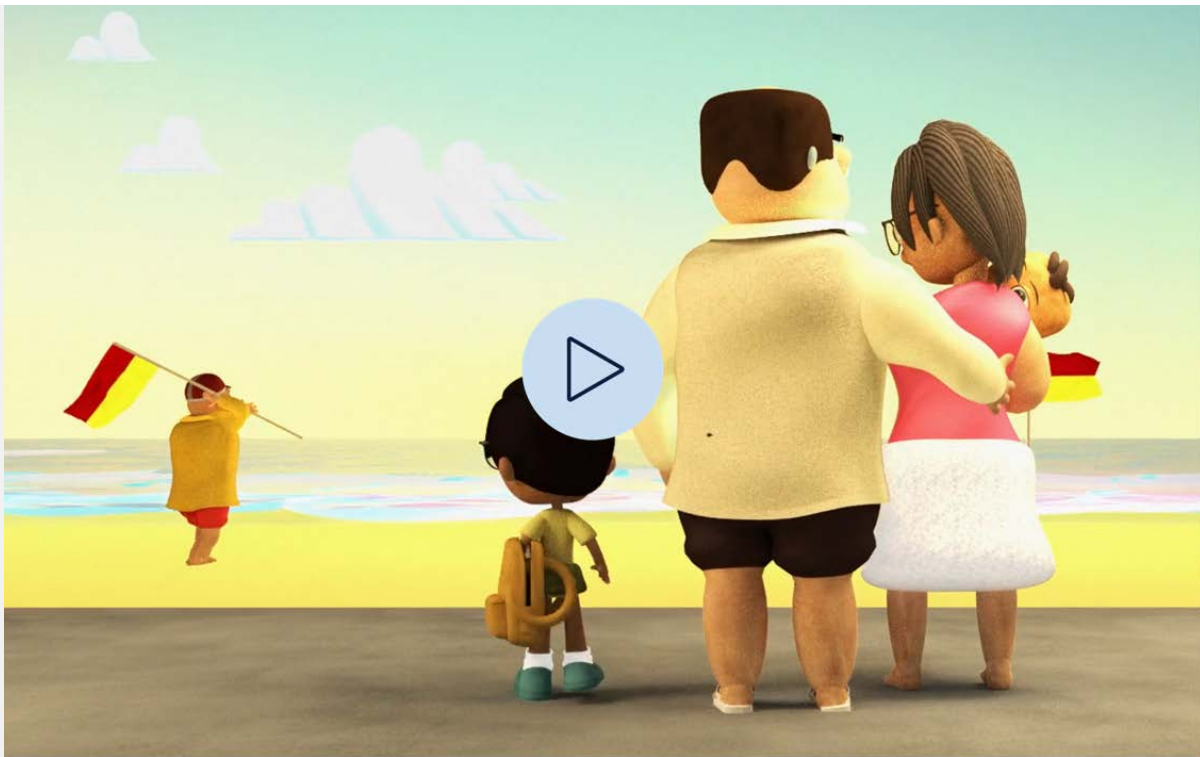
- Peter Banks, Leader School Sport Unit

Representative School Sport Pathway (RSSP)

All aspects of the RSSP including State Championships, weekly inter-school competitions, knock-out competitions and gala days can recommence this term.

When using external venues, event organisers must contact the venue to negotiate and adhere to current NSW Health protocols. Schools should make organisational decisions based on local context, specific to each venue and event. The appropriate COVID-19 Safety Plan of the venue or organiser must also be adopted.

Schools should regularly check for updated information on the Department's [Practical Guide for Sport and Physical Activity](#) (updated 8 February 2021).



School Swimming and Water Safety Program

We are excited to see the recommencement of centrally organised programs in the Sydney metropolitan area, delivering a newly developed 5 day program that focuses on water safety and introduces the use of life jackets, a “clothing day” and other essential water safety skills. This new program will be offered as an option for all schools when registering for future participation in the program and can be extended to all primary Year 2 and above regardless of prior swimming ability.

Registrations for the 2021/2022 season of the program will open by the end of week 5! Schools can choose between the new 5 day water safety program, the 10 day program or a blend of the two for different year groups. Learn more about how to register online [here](#).

To raise awareness about water safety, particularly for this hot summer, when many children may have not had the chance to attend swimming lessons, we produced a fun water safety message which you can [watch here](#).

[Learn more...](#)



Opportunities for students with disability

With events up and running this term, we are here to support teachers and parents/carers with the [classification process for students with disability](#).

Students with an intellectual, physical, vision and/or hearing impairment, including transplant recipients, may be eligible to compete in [multi class events](#).

To stay up-to-date on inclusive school sport opportunities, please email the team with your name and the school you work at.

Contact us...



Participation opportunities

Various opportunities will be held throughout the year, including Multi Sport events, state wide Boccia and Ten Pin Bowling competitions, sport-specific gala days and Come 'n' Try events. Stay tuned!

The [NSW AFL Primary All-Schools Girls 12 Years and Under Selection Trials](#) will be held in March across various NSW venues. This School Sport Unit initiative is open to all primary school girls turning 12 or under in 2021.

Learn more...



NSW Premier's Sporting Challenge (PSC)

NSW Premier's Sporting Challenge registrations for 2021

PSC registrations open week 6 (Monday 1 March). PSC Facilitators or principals can register their school through the [PSC Tracker](#).

New PSC challenge option in 2021 - Race Around Australia (RAA)

[RAA](#) is a virtual physical activity challenge where classes and schools race each other around the coast of Australia. All NSW DoE schools will have the option to participate in RAA, the 10 week Challenge (10wC) or both. RAA will only be available in Term 2, but the 10wC can be completed any time during Terms 2 and/or 3.

Update school details - PSC Facilitators

Is there a new PSC Facilitator at your school? Update the details by completing the [2021 PSC Facilitator Contact Form](#).

[Learn more...](#)



Policy

The [Sport Safety Guidelines](#) support the implementation of the [Sport and Physical Activity Policy](#).

Upcoming resources include:

- Updated *Safe Water Entry for Competitions-Competitive Dive Starts* - required to be implemented for the commencement of Term 1, and therefore are in play for the swimming carnival/championship season in school sport. This compliance resource will be available by the end of week 5 in the [Sport Safety Guidelines](#).
- New teacher rescue award to assist in the supervision of aquatic activities.

[Read more...](#)



Teacher Professional Learning

We are offering a range of practical face-to-face and online workshops this year. We will continue to offer Meet Manager courses online. Visit the Professional Learning Calendar for important information about dates, venues and MyPL registration details.

Due to recent changes by NESA, teachers who complete SSU workshops will receive Elective Professional Development hours for all courses. All workshops have a COVID safe plan and numbers will be capped in accordance with NSW Health and Department guidelines.

[Contact us...](#)



Bring an Olympian to your school!

Start the new Olympic year with an Aussie Olympian visiting your school with Olympics Unleashed!

Free for schools, your students will hear directly from athletes about overcoming challenges, setting goals and following their passion to become their personal best.

[Learn more...](#)

Want to stay up-to-date on SSU events that you are interested in?

Create your own user login so you can subscribe to selected events, export them to your calendar and receive email updates when the event status changes. See our [FAO page for instructions](#).



School Sport Unit

Have you added the School Sport Unit to your DoE Staff Portal page?

Next time you are on your [portal page](#), click 'add new essential' and search for the 'School Sport Unit'.

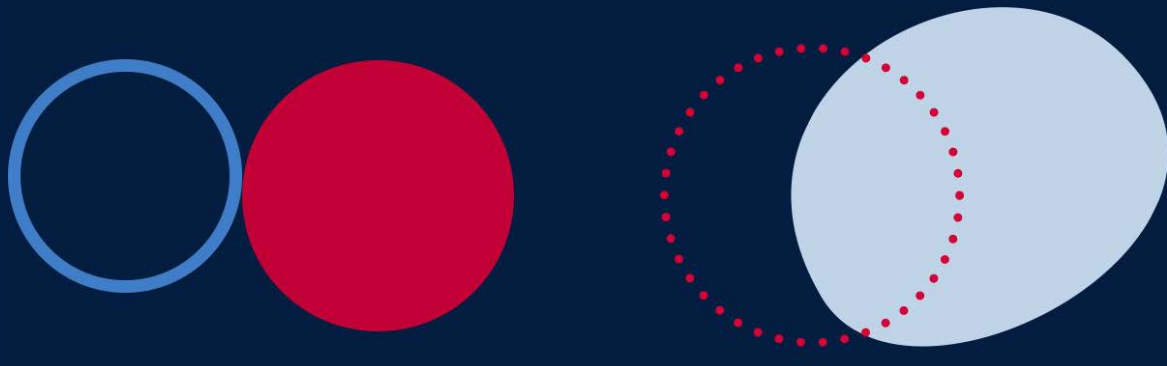
Stay up to date:

Facebook

Youtube

Vimeo

We acknowledge the homelands of all Aboriginal people and
pay our respects to Country.



[View this email in your browser](#)